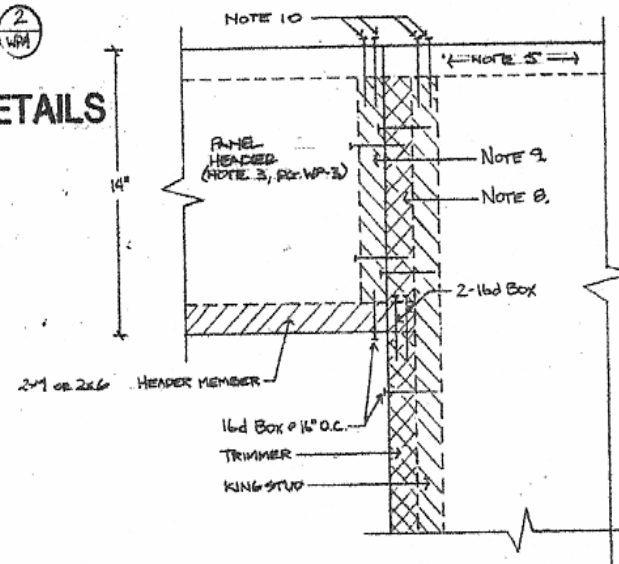


## DOOR FRAMING DETAILS



### NOTES:

1. WALL PANELS, W/ OPEN EDGES, INSTALLED LEAVING ROUGH OPENING DIMENSION IN BETWEEN.
2. NAIL 2x4x802" STD GED TRIMMER TO 2x4x93 1/4" JDD. KING STUD W/ 16d BOX NAILS # 16" O.C. INSERT ASSEMBLY FLUSH IN OPEN EDGES OF WALL PANELS. NAIL KING STUD AND TRIMMER BOTH SIDES OF PANEL PER NAIL SCHEDULES PG. WP-3. TOE-NAIL TRIMMER TO GILL PLATE W/ 2 16d.
3. INSTALL 2x4 DFORMT. HEADER MEMBER, NAIL TO TRIMMERS W/ 2-16d BOX NAILS EACH SIDE OF OPENING. INSTALL 2-2x4x11 1/4" OF CONST. NAILER BLOCKS EACH SIDE SEE DETAIL 2 THIS PAGE.
4. FOLD IN PANEL HEADER, ASSEMBLY FINISH PER WINDOW DETAILS & NOTES PG. WP-3, NAIL SCHEDULE FOR WP-3.
5. INSTALL CONTINUOUS TOP PLATE PER DETAIL 1, NOTE 2, PG. WP-3. NO SPLICES IN WALL PLATE OR POST TO PLATE.
6. FOR LOAD BEARING WALL ONE PANEL SKIN SHALL BE AN EXT. SKIN AS DESCRIBED IN EACH SPEC. PG. WP-1.
7. IF DOOR OPENING IS WIDER THAN 48" OR SUPPORTS MORE THAN ROOF LOAD, REPLACE 2x4 OR 2x6 JDD GED. HEADER MEMBER AND PANEL HEADER W/ SOLID TIMBER HEADER SEE (3) WP-3

TYPICAL DOOR OPENING

SCALE: 3/4" = 1'

### NOTES:

8. AFTER HEADER MEMBER IS INSTALLED, CONNECT FIRST NAILER BLOCK TO KING STUD W/ 2-16d BOX NAILS.
9. CONNECT SECOND NAILER BLOCK TO FIRST NAILER BLOCK W/ 2-16d BOX NAILS. TOE NAIL TO HEADER MEMBER W/ 2-16d BOX NAILS.
10. NAIL TOP PLATE TO NAILER BLOCKS W/ 2-16d EACH.

HEADER & BLOCKING

SCALE: 3" = 1'



**APPROVED**  
by C.M.J. Engineering, Inc., a Department of Housing and Community Development approved third party design approval agency for **FACTORY BUILT HOUSING**  
These plans and/or documents have reviewed according to the requirements of the Florida Building Code of Regulations Title 23, Chapter 2, Subchapter 1. The Florida Building Code is the minimum standard for construction with all applicable laws and regulations. For further information, contact C.M.J. Engineering, Inc. are not a comprehensive analysis of the design and are not provided with any expressed or implied warranties.  
DATE APPROVED: 11/29/78  
C.M.J. ENGR.

STRUCTURAL WALL PANELS  
MODEL GDC 721

U.S. & FOREIGN PATENTS PENDING

WP-4