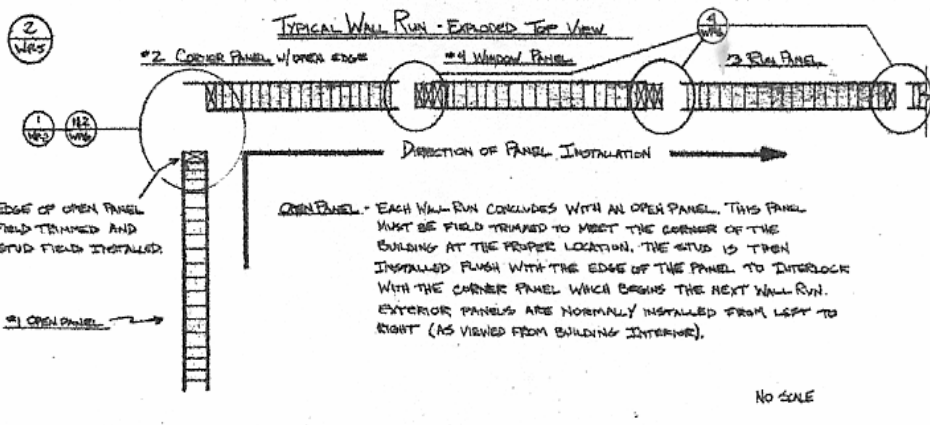
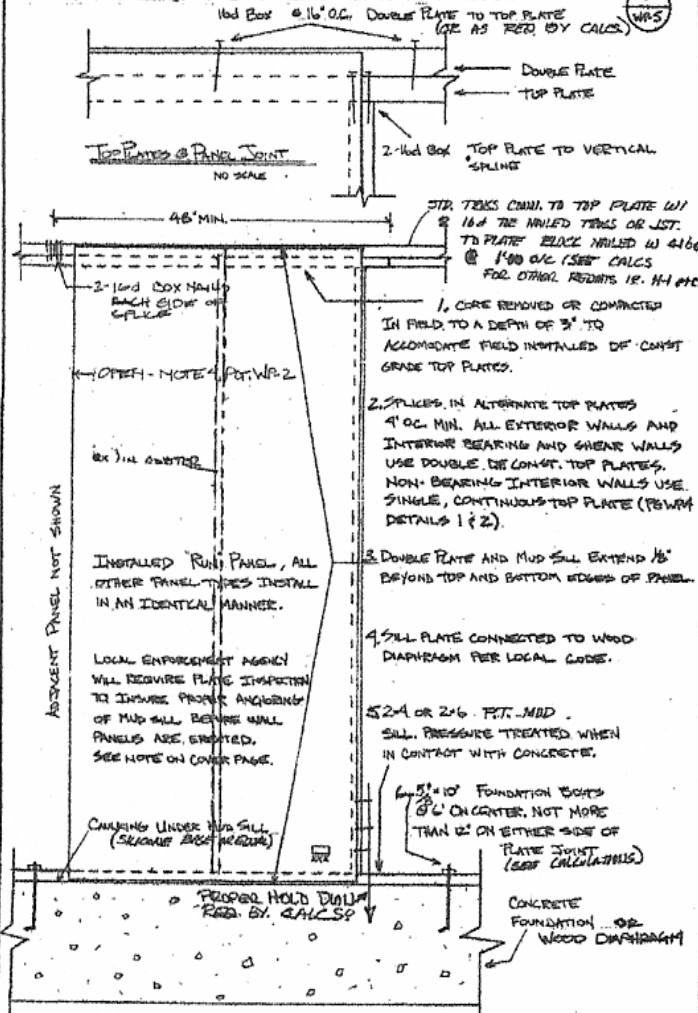


PANEL TO PLATE DETAILS



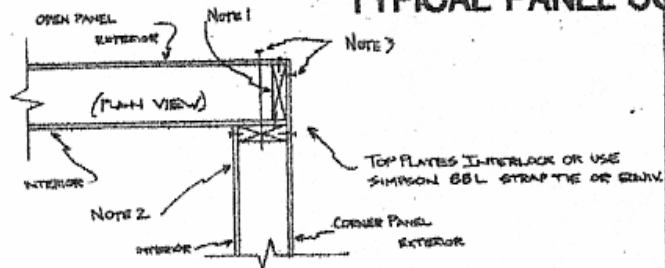
GENERAL NOTES:

1. FACTORY INSTALLED FRAMING MEMBERS
 CORNER PANEL (PK WP-2) - VERTICAL CORNER MEMBER AND VERTICAL SILL LINE.
 RUN PANEL (PK WP-3) - VERTICAL SILL LINE.
 WINDOW PANEL (PK WP-3) - ALL WINDOW FRAMING. ALL EXTERIOR DOOR FRAMING.
 ALL FACTORY INSTALLED MEMBERS SHALL BE 2x4 OR 2x6 STUD GRD. GRADE EXCEPT FOR SOLID TIMBER HEADER MEMBERS WHICH SHALL BE OF #2 OR BETTER.
2. FIELD INSTALLED FRAMING MEMBERS
 OPEN PANEL (PK WP-1, DETAIL 1 & PK WP-6, DETAILS 1 & 2) - VERTICAL CORNER MEMBER.
 INTERIOR DOOR FRAMING (PK WP-4 DETAIL 1)
 MUDSILL, SILL PLATE, AND TOP PLATES (PK WP-5, DETAIL 1)
 ALL FIELD INSTALLED MEMBERS SHALL BE 2x4 OR 2x6 DF COMST. GRADE EXCEPT WHERE NOTED OTHERWISE.
3. FIELD CONNECTIONS
 PANELS ARE SHIPPED TO THE JOBSITE AS INDIVIDUAL COMPONENTS AND MUST BE JOINED TOGETHER IN THE FIELD.
 "RIGHT HAND" AND "LEFT HAND" CORNER CONNECTIONS (PK WP-6 DET. 1 & 2)
 PERPENDICULAR BUTT (PK WP-6 DETAIL 3)
 PANEL JOINTS (PK WP-10 DETAIL 4)
 ALSO SEE DETAIL 2 THIS PAGE FOR OVERVIEW OF FIELD CONNECTIONS.
4. FIELD INSTALLED MEMBERS AND FIELD CONNECTIONS ARE SUBJECT TO INSPECTION AND APPROVAL BY LOCAL ENFORCEMENT AGENCY.
5. ANY CONCENTRATED LOADS, IE: BEAMS, MUST BE APPLIED THROUGH ALIGHT WITHIN THE PANEL, BY CUTTING THE PANEL WHERE THE LOAD OCCURS IF NECESSARY, OR PLACING AT THE PANEL'S EDGE.



STRUCTURAL WALL PANELS
 MODEL NO. 1721

TYPICAL PANEL CONNECTIONS

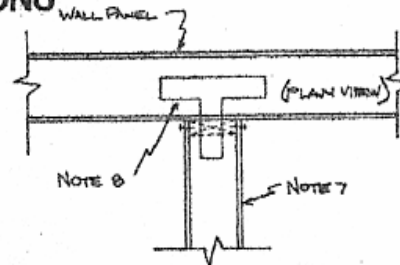


NOTES:

1. FIELD TRIM OPEN PANEL TO REQUIRED LENGTH. FIELD INSTALL 2x4 OR 2x6 STUD (SEE PG. WP-6 DETAIL 2) NAIL PER VERTICAL SPLINE PG. WP-6.
2. GYP. BOARD TRIMMED IN FACTORY. 2x4 OR 2x6 STUD INSTALLED IN FACTORY. GYP. BOARD AND VERTICAL MEMBER OF CORNER PANEL BUTT AGAINST OPEN PANEL. PLYWOOD SKIN OF CORNER PANEL COVERS FIELD INSTALLED VERTICAL MEMBER OF OPEN PANEL. (CORNER PANEL PG. WP-2)
3. W/ OR B/ ONLY COMMON NAILS @ 4" O.C. 60 d ONLY BOX @ 24" O.C. OR USE SIMPSON ASS OR EQUIVALENT @ 24" O.C.

OUTSIDE CORNER DETAIL

① ③

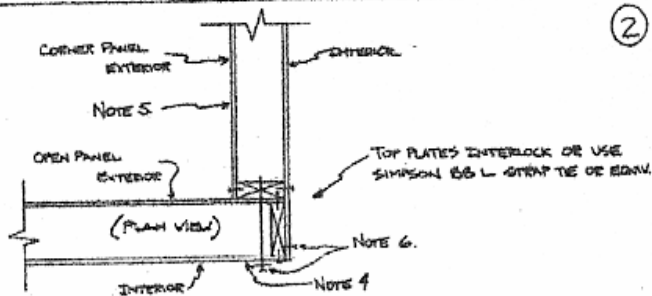


NOTES:

7. WINDOW, RUN, OR OPEN PANEL W/ FACTORY INSTALLED 2x4 OR 2x6 STUD NAIL VERTICAL MEMBER 1/2" (FLUSH) IN PANEL.
8. TOP PLATES INTERLOCK & BUTT, OR USE SIMPSON 126T STRAP TIE OR EQUIVALENT.



PERPENDICULAR BUTT

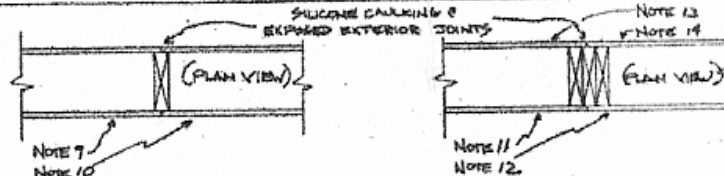


NOTES:

4. FIELD TRIM OPEN PANEL TO REQUIRED LENGTH. FIELD INSTALL 2x4 OR 2x6 STUD NAIL (SEE PG. WP-6 DETAIL 2) NAIL PER VERTICAL SPLINE PG. WP-6.
5. PLYWOOD TRIMMED IN FACTORY. 2x4 OR 2x6 STUD NAIL INSTALLED IN FACTORY. PLYWOOD AND VERTICAL MEMBER OF CORNER PANEL BUTT AGAINST OPEN PANEL. GYP. BOARD SKIN OF CORNER PANEL COVERS FIELD INSTALLED VERTICAL MEMBER OF OPEN PANEL. (CORNER PANEL PG. WP-2)
6. 13.5 GA x 9/32 x 1 5/8" DRYWALL NAILS @ 4" O.C. 60 d ONLY BOX W/ 1/2" x 1/4" FENDER WASHER @ 24" O.C. OR USE SIMPSON ASS OR EQUIVALENT @ 24" O.C.

INSIDE CORNER DETAIL

② ④



NOTES:

9. RIGHT EDGE OF RUN OR CORNER PANEL W/ FACTORY INSTALLED VERTICAL SPLINE (PG. WP-2)
10. LEFT EDGE OF RUN OR OPEN PANEL FITS OVER VERTICAL SPLINE AND NAILED PER FIELD NAILING SCHEDULE (PG. WP-6)
11. RIGHT EDGE OF WINDOW PANEL W/ FACTORY INSTALLED KING STUD, TRIMMER, AND NAILER BLOCKS. (PG. WP-3)
12. LEFT EDGE OF RUN OR CORNER PANEL FITS OVER VERTICAL SPLINE AND NAILED PER FIELD NAILING SCHEDULE (PG. WP-6)
13. RIGHT EDGE OF OPEN PANEL OR CORNER PANEL REMAINS OPEN TO ACCEPT KING STUD AND TRIMMER OF WINDOW PANEL
14. LEFT EDGE OF WINDOW PANEL W/ FACTORY INSTALLED KING STUD, TRIMMER, AND NAILER BLOCKS. (PG. WP-3)
15. REFER TO PAGE WP-6 DETAIL 2 FOR OVERVIEW OF PANEL JOINTS. (TYPICAL WALL RUN)

PANEL JOINTS

STRUCTURAL WALL PANELS
MODEL CPG-721

U. S. & FOREIGN PATENTS PENDING

WP-6

AP

By C. M. J. Engineer